

Presentation to West Area
Committee
Harvey Hadden Leisure Centre
Development
(HH50)

Clive Williams Leisure Transformation Programme
Manager.

NCC Major Programmes.



The Agreed Vision

“ To establish a sustainable network of fewer and better quality community leisure centres which meet modern customer expectations and promote sport, active lifestyles, health and well being”

Nottingham City Council's ambitious Leisure Transformation Programme aim to improve facilities across the city.

- Since 2004 Executive Board Approval, a total of 7 leisure centres, bespoke to the communities they serve, have benefited from significant improvement works as part of Nottingham City Council's Leisure Centre Transformation Programme.

Leisure Centre Transformation Programme to date.

- Portland Leisure Centre £761,000.
- Nottingham Tennis Centre £950,000.
- Clifton Leisure Centre £985,000
- John Carroll Leisure Centre £1.4 million.
- Ken Martin Leisure Centre £2.4 million.
- Djanogly Leisure Centre £6.5 million.
- Victoria Leisure Centre £9.1 million.



LCTP Outputs & Performance

Victoria Leisure Centre

Comparison (Mar-09 Mar 10)
(Feb-12 Nov 12)

Income Apr-Aug 09/10 £78,699

Income Apr-Aug 12/13 £192,510 (+ 144%)

- Fitness Class attendance + 215%
- Flexible Fitness Membership + 857%
- Flexible Fitness Admin Fee + 206%
- Gym Attendance +159%
- Swimming attendance +118%

Noel Street / Djanogly

Comparison (Mar-09 Mar 10)
(Apr-10 Apr 11)

Income Apr-Aug 09/10 £67,927

Income Apr-Aug 11/12 £251,080 (+ 269.6%)

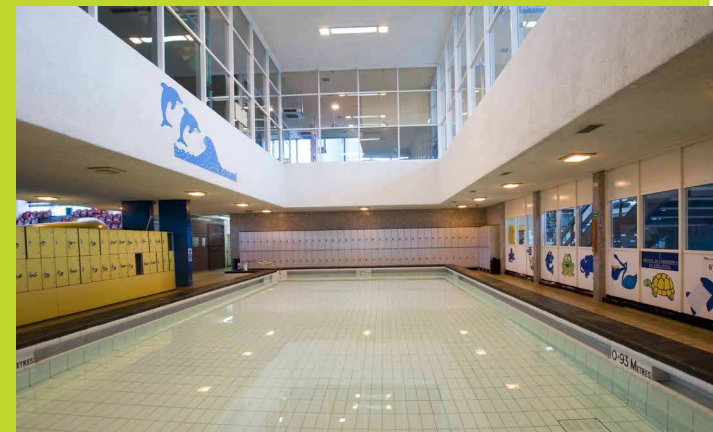
- Fitness Class attendance + 242%
- Flexible Fitness Membership + 911%
- Flexible Fitness Admin Fee + 1032%
- Gym Attendance + 665%
- Swimming attendance +72%

The next part of our journey:

- To develop a replacement facility for Beechdale Swimming Centre on the current Harvey Hadden campus, with refurbishment of the existing building.

Why close Beechdale Swimming Centre?

- The building is past its economic life.
- Building is not fully DDA compliant.
- Replacement parts for plant and equipment are either obsolete or difficult to obtain.
- It is more efficient to have both wet and dry facilities on one site.



A replacement facility at Harvey Hadden will:

- Provide a modern day iconic leisure centre that meets the needs and expectations of the local community.
- Bespoke facility and not a “one shoe fits all”.
- Provide facilities which will increase participation and improve local citizens’ health and well being.
- Provide a 50 metre swimming pool with transversable boom with adjustable pool floors that divide into two 25 metre pools enabling more public swimming access especially during the day.
- Have improved access and facilities for disabled and severely disabled people.
- Be environmentally sustainable by including modern energy saving measures.
- Ensure that Safeguarding issues are met.

The proposed new Leisure Centre will offer the following facilities:

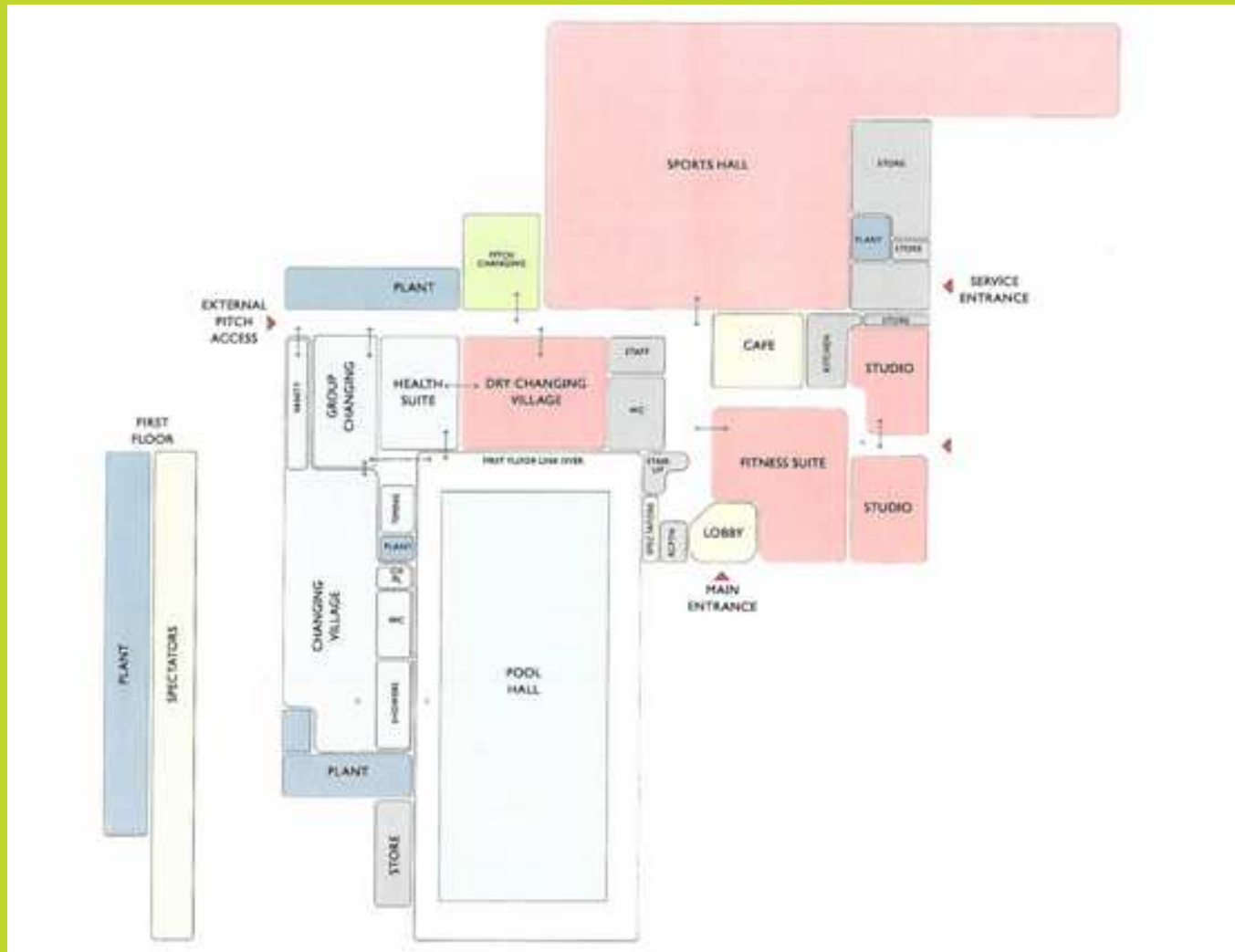
- Two multi-use activity studios for fitness, movement and dance
- 100 station fitness studio
- New male and female dry changing rooms
- New pool changing village with baby, disabled, and group/school changing areas
- Pool viewing and spectator seating
- Health suite – sauna, steam room and Jacuzzi
- Refurbished sports hall
- Vending area and cafeteria facilities



Why a 50 metre pool?

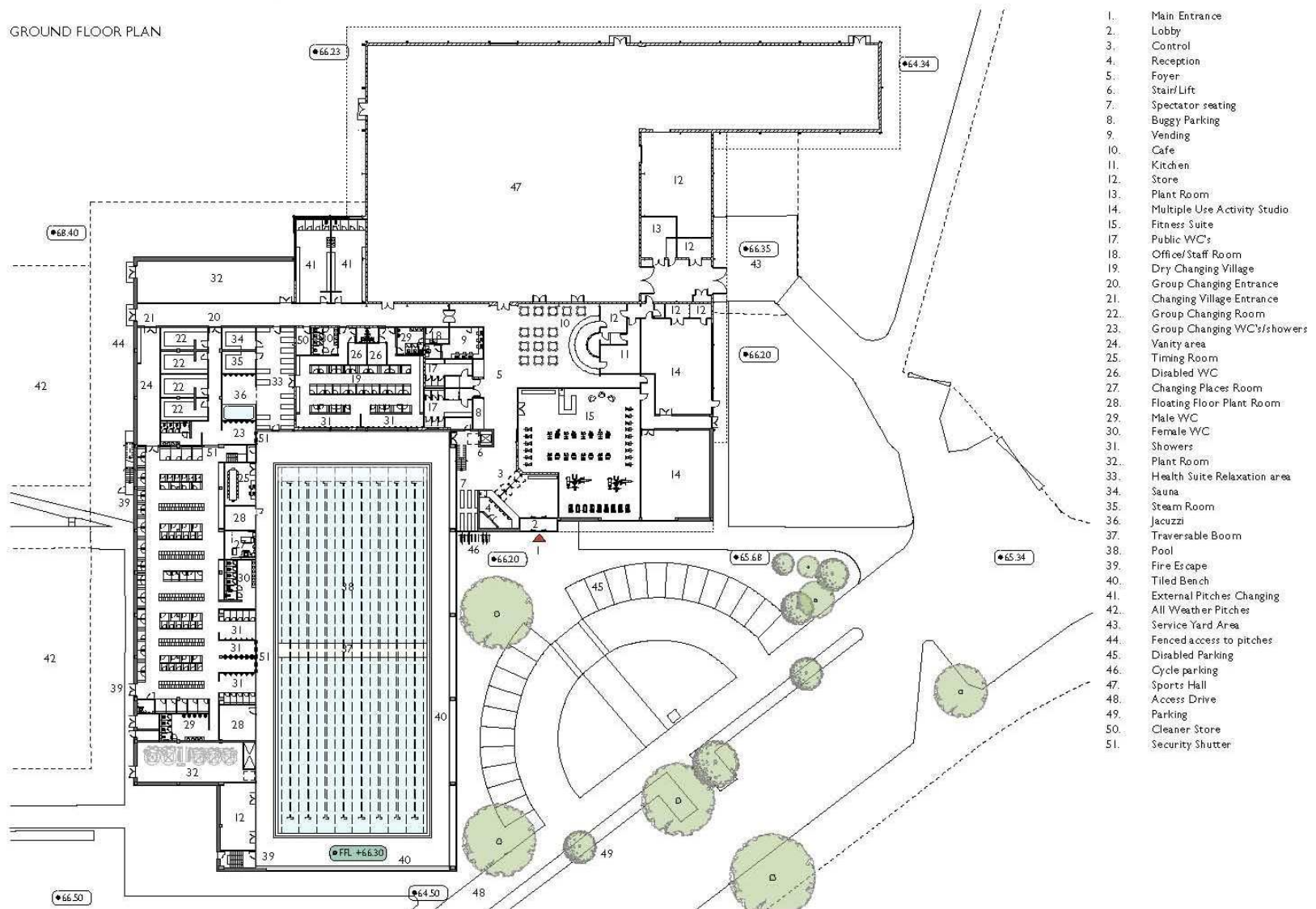
- 25m pool with a large teaching pool.
- Greater flexibility and programming.
- More day and evening swimming.
- Improve swimming tuition. Full pool shallow water).
- The need to replicate the water space of Beechdale Swimming Centre.

Accommodation Schedule

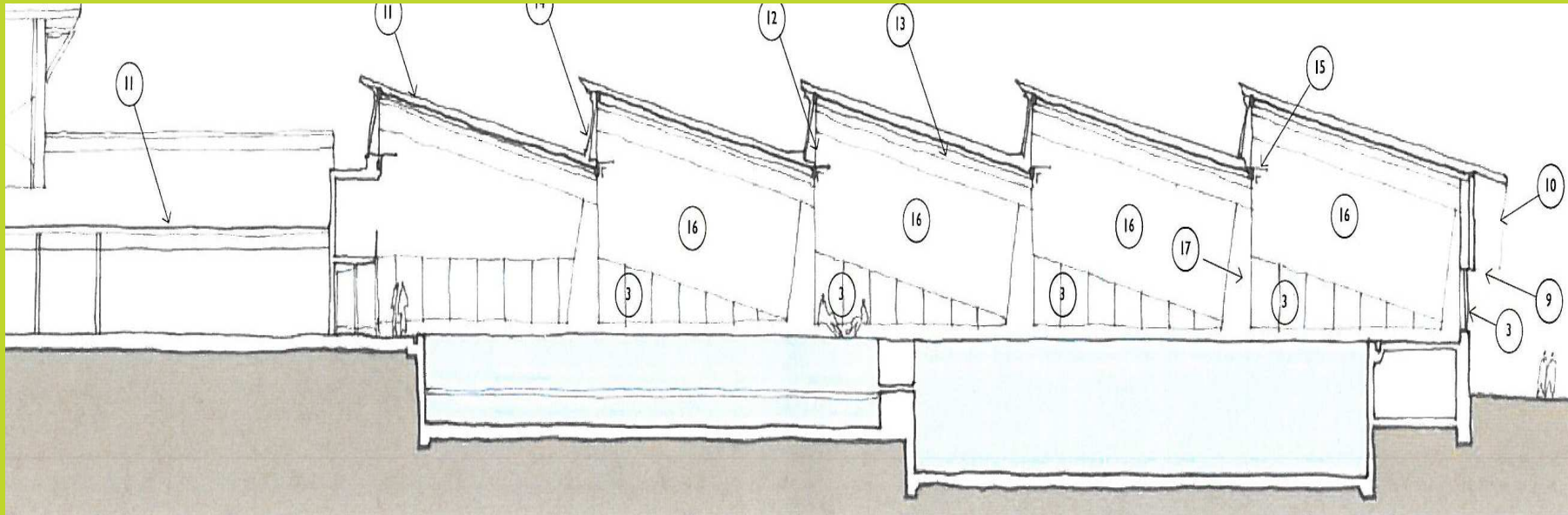


Ground Floor Plan

HARVEY HADDEN LEISURE CENTRE INDICATIVE DESIGNS FOR PUBLIC CONSULTATION



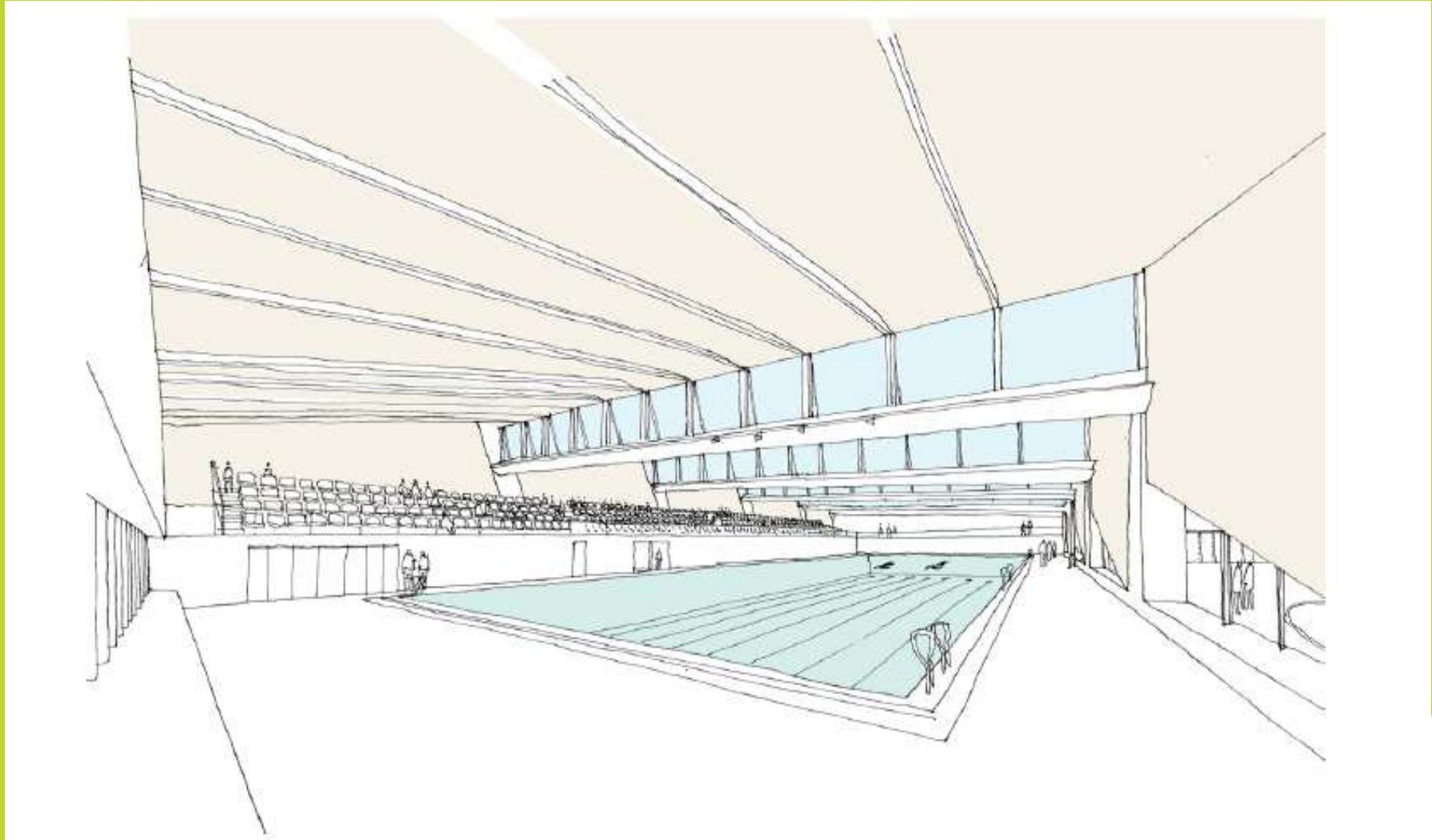
Transversable Boom & Floating Floor



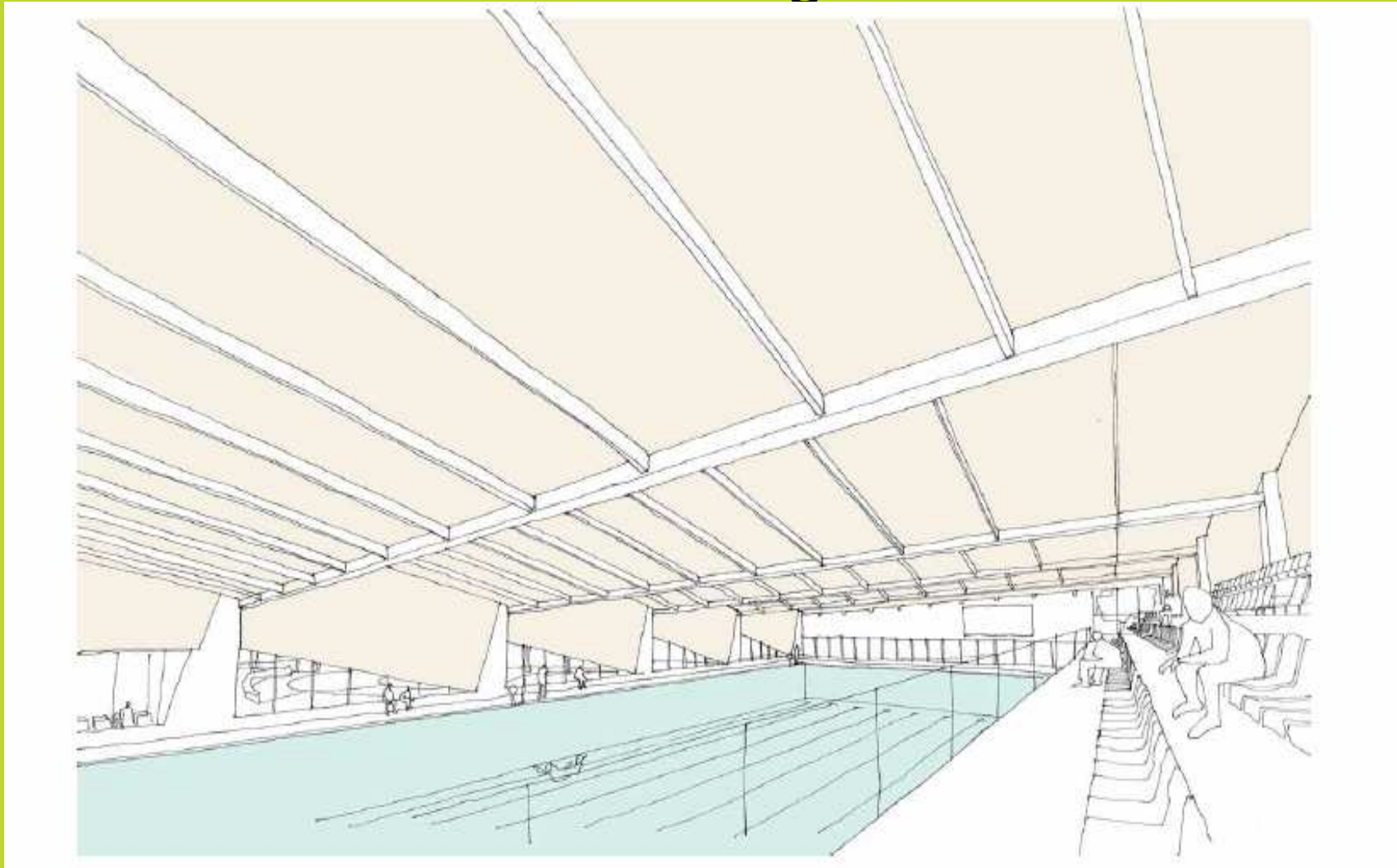
Harvey Hadden Leisure Centre Indicative Designs for Public Consultation



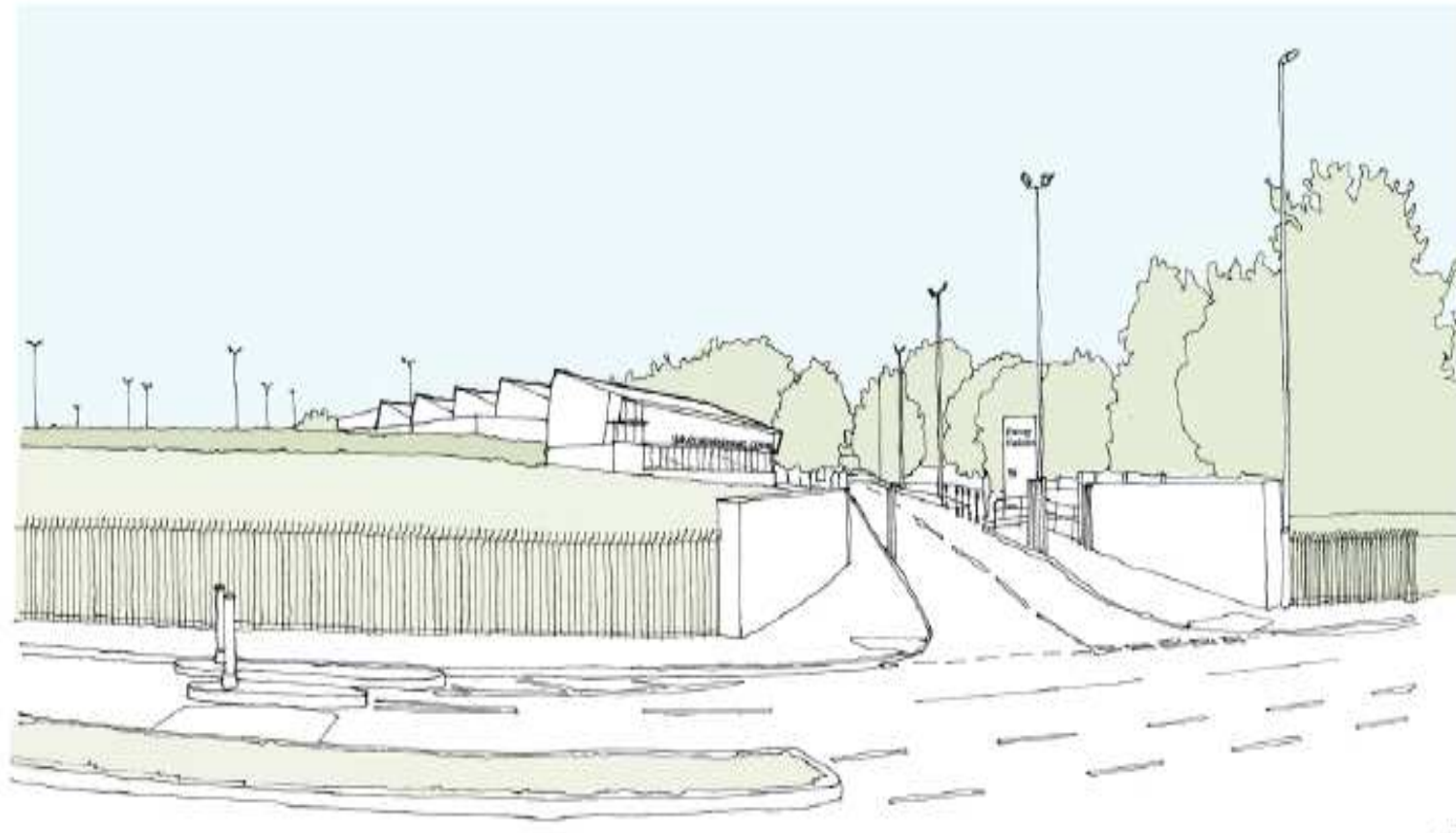
Pool Hall view from scoreboard end at pool level



Pool Hall view from front row of spectator seating



View from Wigman Road and access driveway



Summary of Consultation Feedback to date.

- Please ensure that renewable energy initiatives are included.
- Looks Fantastic! Cant wait.
- Adequate seating for swimming events local & regional.
- Please retain in door athletic track.
- Pool should be reduced in size to ensure investment in athletics.
- Its about time we have something like this in Nottingham.
- Swim facilities look amazing.
- Really enthusiastic about the 50 meter pool.
- Need more diving.
- Please consider water polo.
- Excellent plans for development.
- Pleased council is retaining and refurbishing Sports Hall.
- Really nice layout.
- Its about time that NG8 had a recognisable complete leisure centre.

Sport England Iconic Bid.

Harvey Hadden Leisure Centre - Proposed Site Plan - Cycle Track Option 3 - Exploration Draft



Sport England Iconic Bid

- Bid value - TBA
- Match funding - NGB,s
- Bid timeline - 24th Oct – 17th Dec 2012
- Decision March 2013.
- New Leisure Centre Development complements the Iconic Bid.

What happens next?

- Leisure Centre Public Consultation under way to be completed by 25th November 2012.
- Leisure Centre Stage 1 submission by end November 2012.
- Planning Submission end November 2012.
- Leisure Centre Stage 2 submission by March 1st 2013.
- Report to Corporate Leadership Group.
- Executive Board Approval for Construction 16th April 2013.
- Report to Strategic Partnership Board.
- Anticipated start on site Spring 2013.
- Anticipated completion Spring 2015.

Thank you.

Any Questions?